

PERRY COUNTY



SHERIFF'S OFFICE

2016 ANNUAL REPORT

William R. Barker, Sheriff

PAGE LEFT BLANK INTENTIONALLY

Call Totals for 2016 shows the Daily breakdown for Calls for Service and Reports Taken by Day of Week and the Average Daily Call Volume and Average Daily Reports Taken.

2016 TOTALS								
	SUNDAY	MONDAY	TUESDAY	WEDNESDAY	THURSDAY	FRIDAY	SATURDAY	TOTALS
TOTAL CALLS	1750	2274	2678	2240	2258	2151	2013	15364
TOTAL REPORTS	263	594	803	580	368	346	324	3278
AVERAGE/DAY	34	44	52	43	43	41	39	
AVERAGE/REPORTS	5	11	15	11	7	7	6	

9-1-1 Calls received by the Perry County Sheriff’s Office PSAP

9-1-1 Stats show the Total Calls received from 9-1-1 and the Breakdowns between Landline and Wireless Calls, the Dispatch Position the Calls were answered from (Position 0 is Abandoned Calls or 9-1-1 Hang-Ups) and the Phone Trunk Distribution for the Calls.

2016 911 STATS					
CALL DATA		POSITION DATA		TRUNK DATA	
TOTAL CALLS	2623	POSITION 0	69	TRUNK 1	536
LAND LINE	391	POSITION 1	1235	TRUNK 2	542
WIRELESS	2118	POSITION 2	849	TRUNK 3	535
COMPLETED	2509			TRUNK 4	540
ABANDONED	82				

CALL DATA
 TOTAL CALLS = TOTAL OF TRUNK DATA
 COMPLETED CALLS = LANDLINE + WIRELESS

POSITION DATA – CALLS RECEIVED BY EACH DISPATCH WORKSTATION (2 AT PCSO PSAP)
TRUNK DATA – TOTALS FOR EACH “TRUNK” OR PHONE LINE

Shows the Comparison of the Monthly Calls for Service received and Trending Chart from 2011 thru 2016.

TOTAL CALL VOLUME BY MONTH 2011

JAN	FEB	MAR	APR	MAY	JUNE	JULY	AUG	SEPT	OCT	NOV	DEC	TOTAL
603	617	717	694	908	846	920	863	745	788	810	705	9216

TOTAL CALL VOLUME BY MONTH 2012

JAN	FEB	MAR	APR	MAY	JUNE	JULY	AUG	SEPT	OCT	NOV	DEC	TOTAL
703	751	924	840	910	852	971	885	808	811	795	774	10024

TOTAL CALL VOLUME BY MONTH 2013

JAN	FEB	MAR	APR	MAY	JUNE	JULY	AUG	SEPT	OCT	NOV	DEC	TOTAL
803	590	805	890	780	839	1088	1068	958	950	908	931	10610

TOTAL CALL VOLUME BY MONTH 2014

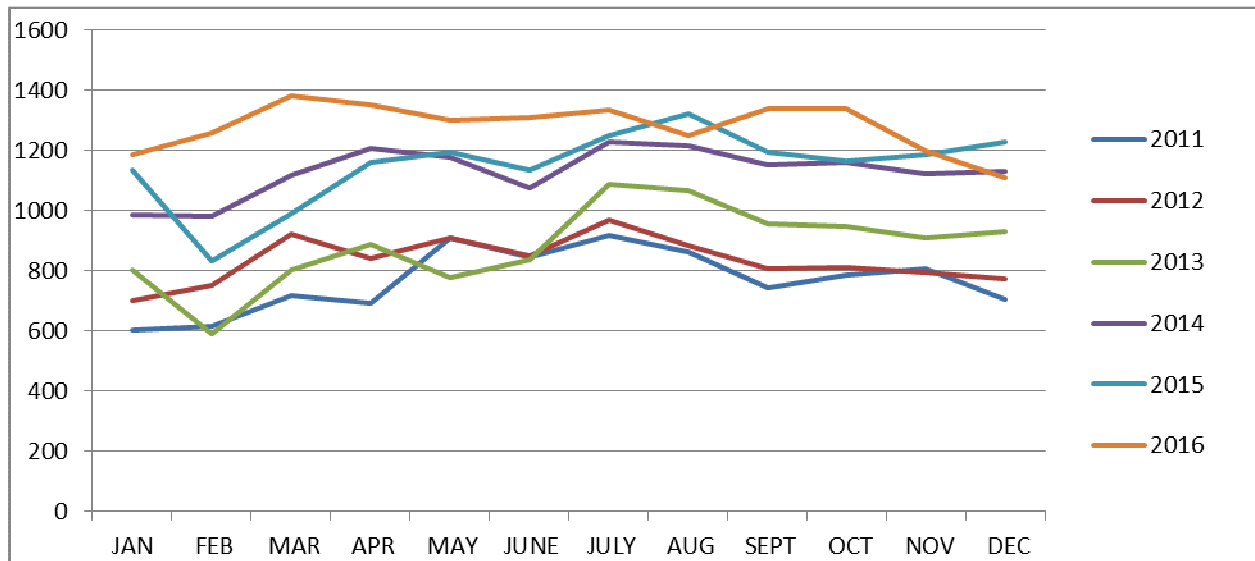
JAN	FEB	MAR	APR	MAY	JUNE	JULY	AUG	SEPT	OCT	NOV	DEC	TOTAL
988	981	1120	1206	1179	1074	1231	1218	1153	1161	1124	1130	13565

TOTAL CALL VOLUME BY MONTH 2015

JAN	FEB	MAR	APR	MAY	JUNE	JULY	AUG	SEPT	OCT	NOV	DEC	TOTAL
1137	835	990	1161	1195	1136	1251	1321	1196	1165	1187	1228	13802

TOTAL CALL VOLUME BY MONTH 2016

JAN	FEB	MAR	APR	MAY	JUNE	JULY	AUG	SEPT	OCT	NOV	DEC	TOTAL
1185	1258	1382	1353	1301	1312	1334	1249	1338	1339	1201	1112	15364



Compares 2011 to 2016 Calls For Service where Change shows the Percentage of Increase/Decrease between 2015 & 2016 and 6 Year Change shows the Percentage of Increase/Decrease between 2011 and 2016.

2011 - 2016 CALL COMPARISON								
ANNUAL TOTALS								
	2011	2012	2013	2014	2015	2016	CHANGE	6 YEAR CHANGE
TOTAL CALLS	9216	10024	10610	13565	13802	15364	10%	40%

In 2014, in addition to Jail Transports several other new Nature Types were added for tracking by the Sheriff's Office. While these Nature Types were performed by the Deputies and Dispatchers in the past, they were tracked differently though the CAD System and not accounted for in previous years totals. 2014 gives a more accurate look at the duties performed by the Sheriff's Office.

Shows the Calls for Service that the Perry County Sheriff's Office handled in 2016.

NATURE	NATURE TOTAL
9-1-1 TRANSFER	33
911 HANG UP	99
911 TEST	11
ABDUCTION - KIDNAPPING	1
ACCIDENT (HIT SKIP)	34
ACCIDENT (INJURY)	82
ACCIDENT (PROPERTY DAMAGE)	209
ACCIDENT(INJURY)-HIT SKIP	1
ACCIDENT-DEER	64
ACCIDENTAL OVERDOSE	8
AGGRAVATED MENACING	0
ALARM DROP	498
ALARM DROP COMMERCIAL	14
ALARM DROP RESIDENTIAL	17
ANIMAL AT LARGE	20
ANIMAL CALL	234
ARSON FIRE	4
ASSAULT	88
ASSAULT IN PROGRESS	0
ASSIST OTHER UNIT	320
ASSIST OTHER UNIT EMERGENCY	18
ASSIST OTHER UNIT LEADS ENTRY	9
ASSIST VILLAGE L.E.	78
ASSIST VILLAGE L.E. EMERGENCY	14
ASSIST OTHER UNIT - EMS	53
ASSIST OTHER UNIT - FIRE	17
BACKGROUND CHECK	159
BAD CHECKS / FORGERY	5
BOMB THREAT	2
BREAKING/ENTERING	98
BURGLARY	93
BURGLARY IN PROGRESS	13
CCW PERMIT	898
CHILDREN SERVICES COMPLAINTS	65
CHILDREN SERVICES REFERRAL	2
CIVIL PROCESS	88
COMPLAINT	509

CRIMINAL DAMAGING	116
CRIMINAL MISCHIEF	0
DEAD ON ARRIVAL	36
DEAD ON ARRIVAL - SUSPICIOUS	1
DISABLED VEHICLE	218
DISASTER SIREN ACTIVATION	0
DISASTER SIREN TEST	5
DOG BITE	10
DOG WARDEN COMPLAINT	44
DOMESTIC DISPUTE	102
DOMESTIC DISPUTE-INACTIVE	15
DOMESTIC VIOLENCE-INACTIVE	64
DOMESTIC VIOLENCE	119
DRUNK	83
EMERGENCY NOTIFICATION	19
EMPLOYEE BACKGROUND CHECK	1
ESCAPE OR JAIL BREAK	1
ESCORT OR PARADE	14
EVIDENCE DESTRUCTION ORDER	1
EXOTIC ANIMAL REGISTRATION	0
EXPLOSIVE DEVICE	1
EXTRA PATROL	271
FAILURE TO REGISTER	7
FFL APPLICATION	1
FIGHT	50
FIRE	5
FIREARM - FOUND	1
FIREARM - SAFEKEEPING	2
FIREARM REGISTRATION	1
FIREARMS QUALIFICATION	4
FIREWORKS	7
FLOOD EMERGENCY	1
FOLLOW UP	14
FUNERAL ESCORT	17
GAS DRIVE OFF	2
GRASS FIRE	1
GUN SIEZURE COURT ORDER	5
HOMICIDE	1
IDENTITY THEFT	32
INFORMATION ONLY	5

INTERNAL INVESTIGATION	13
JUVENILE - RUNAWAY	24
JUVENILE - UNRULY	80
JUVENILE - CUSTODY DISPUTE	88
JUVENILE-MISSING	8
JUVENILES	68
LARCENY	345
LARCENY IN PROGRESS	0
LARCENY OUT OF VEHICLE	52
LEVEL 1 SNOW EMERGENCY	1
LEVEL 2 SNOW EMERGENCY	1
LITTER COMPLAINT	104
LIVE STOCK ON ROADWAY	36
LOG NOTE	265
LOST / FOUND PROPERTY	39
MAIL TAMPERING	0
MAN WITH GUN	17
MAN WITH KNIFE	5
MENACING	17
MENTAL	100
MISSING PERSON	21
MISSING PERSON FOUND	2
MISSING PERSON-IMMEDIATE THREAT	0
MISSING PERSON SEARCH	6
MONEY ESCORT	11
MOTORCYCLE,ATV,MINIBIKE	0
NARCOTICS	54
NARCOTICS METH LAB	0
NARCOTICS TASK FORCE	126
NATURE UNKNOWN	32
NEIGHBOR TROUBLE	18
NEIGHBOR TROUBLE - INACTIVE	38
NOISE COMPLAINT	63
NOTIFICATION - WELL BEING CHECK	279
OFFENDER CLOSE OUT	0
OPEN DOOR	17
OTHER AGENCY PROTECTION ORDER	1
OTHER DOCUMENTS-NOT BAD CHECKS	0
PARKING VIOLATION	11
PHONE HARASSMENT	7

PO VIOLATION-COMMON PLEAS	27
PO VIOLATION-COUNTY COURT	22
PRE-AWA	1
PRESCRIPTION DROP BOX	3
PROJECT LIFESAVER REGISTRATION	4
PROPERTY MAINTENANCE	0
PROTECTION ORDER	7
PROWLERS	66
PUBLIC INTERACTION EVENT	13
RADIO TEST	82
RAPE	8
RECORDS DISPOSAL	2
RECOVERED STOLEN OTHER AGENCY	8
RECOVERED STOLEN PROPERTY OTHER	3
RECOVERED STOLEN PROPERTY	8
RECOVERY STOLEN/WANTED VEHICLE	10
REPOSSESSION	104
REQUEST K-9	2
ROAD CLOSED	2
ROBBERY	7
SCHOOL RESOURCE COMPLAINT	15
SCRAP YARD REGISTRATION	0
SECURITY ASSESSMENT	0
SERVICE RUN-FIRE	0
SEX OFFENDER TIER 1	1
SEX OFFENDER TIER 2	2
SEX OFFENDER TIER 3	1
SEX OFFENSE	27
SHOOTING	5
SHOPLIFTER	7
SHOTS FIRED	45
SNOW EMERGENCY	4
SOMEONE EXPOSING THEMSELVES	1
SPECIAL DETAIL	3
SQUAD RUN	4
STABBING OR CUTTING	1
STAFF MEETING/TRAINING	8
STOLEN CAR	67
STRUCTURAL FIRE	0
SUBPEONA	5

SUICIDE	1
SUICIDE ATTEMPT	112
SUICIDE ATTEMPT OVERDOSE	9
SUSPICIOUS CAR	470
SUSPICIOUS PERSON	277
THREATS OR HARASSMENT	241
TLO COMPLAINT	0
TORNADO WARNING	1
TRAFFIC DETAIL	1
TRAFFIC JAM OR ROADBLOCKED	13
TRAFFIC OFFENSE	1082
TRANSFERRED CALLS	77
TRANSPORT CONVEYANCE	78
TRANSPORT JDC	58
TRANSPORT OTHER COUNTY	208
TRANSPORT REMOVAL	60
TRANSPORT SEORJ	598
TRASH/DUMPSTER FIRE	1
TRESPASSING COMPLAINT	183
UNAUTHORIZED USE OF VEHICLE	28
UNLOCK	3
USE OF FORCE	20
USE OF K-9	39
VANDALISM	72
VEHICLE FIRE	1
WANTED VEHICLE	4
WARRANT ARREST	333
WORK ORDER	1
GRAND TOTAL	11630

Crime Stats for Violent and Theft/Burglary Related Crimes

Compares 2011 thru 2016 with Change indicating the Percentage of Increase or Decrease between 2015 & 2016 Calls. 2011 Calls are provided as a reference. These Natures are based on Dispatch Information at the Time of Call and that some of these calls are handled by Local P.D. if they are on Duty in their respective Villages since the PCSO handles the Dispatching for these calls.

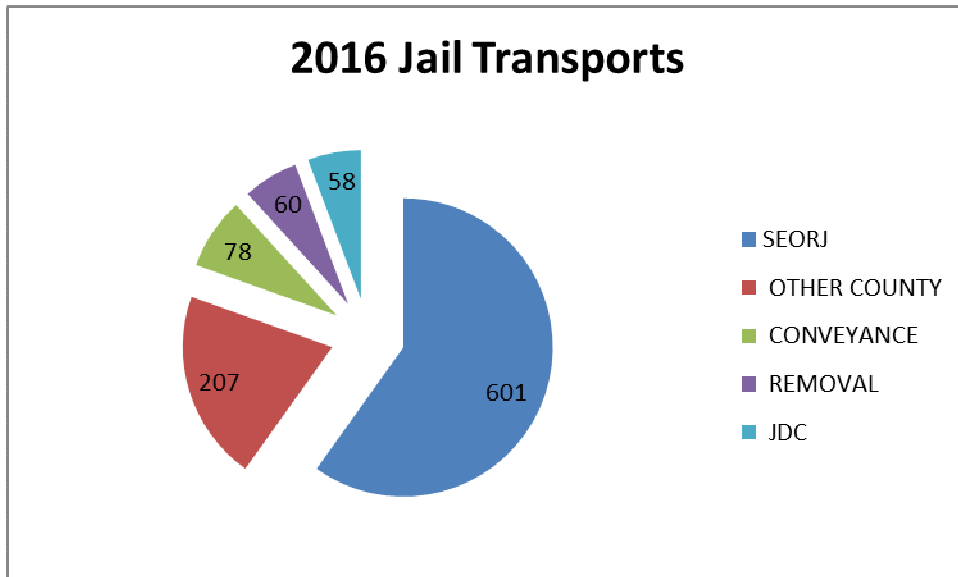
2016 THEFT CRIMES							
	2011	2012	2013	2014	2015	2016	CHANGE 2015/2016
BURGLARY	188	184	132	102	140	116	-17%
BREAKING & ENTERING	170	155	131	106	105	98	-7%
LARCENY	400	436	401	377	380	345	-9%
IDENTITY THEFT	21	31	25	42	52	32	-38%
LARCENY OUT OF VEHICLE	-	-	-	29	63	52	-17%
GAS DRIVE OFF	-	-	-	0	1	2	100%
SHOPLIFTER	-	-	-	1	4	7	75%
ROBBERY	9	5	7	4	4	7	75%
STOLEN CAR	41	48	48	53	63	67	6%
UNAUTHORIZED USE	10	13	19	20	15	28	87%
TOTALS	839	872	763	734	827	754	-9%

2016 VIOLENT CRIMES							
	2011	2012	2013	2014	2015	2016	CHANGE 2015/2016
ASSAULT	101	112	109	99	103	88	-15%
DOMESTIC VIOLENCE	150	149	211	173	184	183	-1%
DOMESTIC DISPUTE	168	155	104	84	77	117	52%
NEIGHBOR TROUBLE	27	43	38	47	44	56	27%
FIGHT	34	67	68	61	73	50	-32%
RAPE	9	5	0	8	5	8	60%
SHOOTING	17	11	6	7	4	5	25%
STABBING	1	3	2	1	1	1	0%
HOMICIDE	0	0	0	1	2	1	-50%
TOTALS	507	545	429	481	493	509	3%

2016 JAIL TRANSPORTS

The Perry County Sheriff’s Office is responsible for Transporting prisoners for Court appearances and to Prison.

2016 JAIL TRANSPORTS	
Transport SEORJ	601
Transport other county	207
Transport Conveyance	78
Transport Removal	60
Transport JDC	58
	<hr/>
	1004



CIVIL STATISTICS

The Civil Division of the Perry County Sheriff's Office is responsible for the processing and tracking of Court documents (subpoenas, Protection Orders, Jury Notices, Civil Hearings, etc.) to be served by Sheriff's Deputies in addition to processing and entering of Warrants and Sheriff's Sales.

TOTAL COURT PAPERS SERVED	1333		
TOTAL COURT PAPERS FAILED	403		
TOTAL WARRANTS SERVED	457		
COURT PAPERS MILES TRAVELED	36,842		
WARRANTS MILES TRAVELED	21,202		
WARRANTS TO REMOVE	126	MILEAGE	12,555
WARRANTS TO CONVEY	76	MILEAGE	9,567
SHERIFF'S SALES	141		
CONCEAL CARRY PERMITS	782 INITIAL		
	128 RENEWALS		
CIVIL PROTECTION ORDERS SERVED	161		

2016 STATISTICS FOR CODE T.F. / PERRY COUNTY

These stats are taken from records recorded by the Perry County Sheriff's Office. These stats may be different than what is on file at the Task Force's main office as some cases were not reported to the TF main Office.

The following is a breakdown of the types/amounts drugs and assets seized in 2016 by the drug task force in Perry County:

Cocaine	706 grams*
Currency	\$53357.59*
Firearms	30
Heroin	269.60 grams*
LSD	12 doses
Marijuana	30,313.85 grams
Methamphetamine	1,167.64 grams*
Ecstasy	.48 grams
Mushrooms	17 doses
Prescription Drugs/Diverted	2,143 doses
Meth Labs Seized	8 labs
Vehicles Seized	22

*A portion of these seizures occurred outside of Perry County

2016 Drug Investigations

Cleared	115
Open	14
Closed	0

2016 CASE INVESTIGATIONS

General Case Investigations

General case investigations are handled by a dedicated Sgt. Investigator for the Office. These are cases that require more in depth investigation than those cases normally handled by the Road Deputy's.

Cleared	52
Open	36
Closed	62

2016 Children Services Investigations

In 2016, The Perry County Sheriff's Office & Perry County Children Services were able to place a Deputy with Children Service's to assist with investigations.

Cleared	11
Open	21
Closed	96

2016 Litter Investigations

The Perry County Sheriff's Office provides a Deputy that works CLFP Solid Waste District for Perry County. This Deputy is funded by monies generated by local landfills.

Cleared	17
Open	7
Closed	75

Cleared – Cases that have been presented for formal charges or have been charged.

Open – Cases that remain under investigation.

Closed – Cases that have been closed out due to lack of evidence, no suspect or other issues that prevent prosecution.