

# **PERRY COUNTY**



## **SHERIFF'S OFFICE**

### **2018 ANNUAL REPORT**

**William R. Barker, Sheriff**

PAGE LEFT BLANK INTENTIONALLY

**CONTENTS****PAGE**

<b>3</b>	<b>FORWARD</b> - Perry County Sheriff's Office Stats for 2018
<b>5</b>	<b>Call Totals</b> - Daily Breakdown - 9-1-1 Totals
<b>6</b>	<b>Comparison of Monthly Calls For Service</b>
<b>7</b>	<b>Monthly Calls For Service Trending Chart</b> - 2011 – 2018 Call Comparison Annual Totals
<b>8</b>	<b>Calls For Service by Nature Type</b>
<b>13</b>	<b>Crime Stats</b> - Theft Crimes Chart - Violent Crimes Chart
<b>14</b>	<b>2018 Jail Transports</b> - Transport Chart
<b>15</b>	<b>2018 Civil Stats</b>
<b>16</b>	<b>2018 Case Investigations</b>
<b>18</b>	<b>General Case Stats</b>
<b>19</b>	<b>2018 Training Received</b>
<b>20</b>	<b>2018 Misdemeanor and Felony Charges</b>
<b>21</b>	<b>2018 Misdemeanor Case Stats</b>
<b>22</b>	<b>2018 Children Services Investigations</b>
<b>23</b>	<b>2018 Ohio Collaborative Report</b>
<b>24</b>	<b>2018 Central Ohio Drug (CODE) Task Force Report</b>

## FORWARD

### Perry County Sheriff's Office Stats for 2018

In 2018, The Perry County Sheriff's Office employed 17 staff members actively and several auxiliary deputies.

Within the office one (1) staff member is assigned to civil forfeitures, one (1) member is assigned to records and one (1) member is assigned as a civil clerk. The Sheriff's Office also employs one (1) member to handle/prepare concealed carry applications.

The patrol division consists of six (6) full time deputies two (2) of which have certified k-9 partners. The patrol division also has two (2) patrol Sergeants. The patrol division also has one (1) school resource officer assigned to Miller Schools, one (1) officer assigned to Children Services Investigations, one (1) officer assigned to Perry County Recycling (Liter) investigations and one (1) officer assigned to Job and Family Services.

The Investigations division of the Sheriff's Office is broken down into two (2) departments General Case Investigations and the Code Task Force Investigations.

The General Case Investigation employee's one (1) member is a Sergeant Investigator. The drug Task force investigations employs two (2) members one (1) Lieutenant and one (1) Detective.

During the 2018 year, the Perry County Sheriff's Office as a whole, received 16,994 calls for service. As a result of those calls for service, the Perry County Sheriff's Office presented 68 Felony cases to the Perry County Grand Jury in 2018. The 68 cases yielded 186 Felony charges. The Perry County Sheriff's Office presented 74 percent of all cases to the Perry County Grand Jury in 2018. Some of those calls for service was a result of a Traffic control grant as well routine patrol in the county resulting in 251 misdemeanor traffic violation tickets being filed. The Perry County Sheriff's Office also submitted/filed 400 misdemeanor charges in 2018.

In total the Perry County Sheriff's responded to 16,994 calls for service and completed 837 combined felony and misdemeanor charges. The Perry County Sheriff's Office has Thirteen (13) members who actively handle calls for service at the Perry County Sheriff's Office on average each member handled 1,307 calls for service per year and filed 64 charges as a result of the 1,307 calls for service on average each Deputy handled. On average this is .60 calls per hour for the entire year for each Deputy.

The calls for service include emergency calls, active crimes, inactive crimes, jail transports, concealed carry applications, sex offender registrations, internal investigations, public interaction events, background applications, and service of court orders.

As you can see times are busy at the Perry County Sheriff's Office. Each member takes great pride in handling each case as it comes in and trying to provide closure for each crime victim. We can ensure the general public that each of us do our very best to provide clearance on each case. We also recognize that the numbers provided in this report are a beginning point and would like to improve on these numbers as we continue throughout the years. Employees of the Sheriff's Office look forward to improving on these numbers in 2019.

Call Totals for 2018 shows the Daily breakdown for Calls for Service and Reports Taken by Day of Week and the Average Daily Call Volume and Average Daily Reports Taken.

2018 ANNUAL TOTALS								
	SUNDAY	MONDAY	TUESDAY	WEDNESDAY	THURSDAY	FRIDAY	SATURDAY	TOTALS
<b>TOTAL CALLS</b>	1943	2260	2750	2635	2482	2518	2416	17004
<b>TOTAL REPORTS</b>	1142	1456	1652	1587	1435	1375	1354	10001
<b>AVERAGE/DAY</b>	37	43	53	51	48	48	46	
<b>AVERAGE/REPORTS</b>	22	28	32	31	28	26	26	

#### 9-1-1 Calls received by the Perry County Sheriff's Office PSAP

9-1-1 Stats show the Total Calls received from 9-1-1 and the Breakdowns between Landline and Wireless Calls, the Dispatch Position the Calls were answered from (Position 0 is Abandoned Calls or 9-1-1 Hang-Ups) and the Phone Trunk Distribution for the Calls.

2018 ANNUAL 911 STATS					
CALL DATA		POSITION DATA		TRUNK DATA	
<b>TOTAL CALLS</b>	1979	POSITION 0	145	TRUNK 1	569
<b>LAND LINE</b>	444	POSITION 1	1164	TRUNK 2	559
<b>WIRELESS</b>	1603	POSITION 2	670	TRUNK 3	495
<b>COMPLETED</b>	1822			TRUNK 4	239
<b>ABANDONED</b>	145				

#### CALL DATA

TOTAL CALLS = TOTAL OF TRUNK DATA

COMPLETED CALLS = LANDLINE + WIRELESS

POSITION DATA – CALLS RECEIVED BY EACH DISPATCH WORKSTATION (2 AT PCSO PSAP)

TRUNK DATA – TOTALS FOR EACH "TRUNK" OR PHONE LINE

Shows the Comparison of the Monthly Calls for Service received and Trending Chart from 2011 thru 2018.

**TOTAL CALL VOLUME BY MONTH 2011**

JAN	FEB	MAR	APR	MAY	JUNE	JULY	AUG	SEPT	OCT	NOV	DEC	TOTAL
603	617	717	694	908	846	920	863	745	788	810	705	9216

**TOTAL CALL VOLUME BY MONTH 2012**

JAN	FEB	MAR	APR	MAY	JUNE	JULY	AUG	SEPT	OCT	NOV	DEC	TOTAL
703	751	924	840	910	852	971	885	808	811	795	774	10024

**TOTAL CALL VOLUME BY MONTH 2013**

JAN	FEB	MAR	APR	MAY	JUNE	JULY	AUG	SEPT	OCT	NOV	DEC	TOTAL
803	590	805	890	780	839	1088	1068	958	950	908	931	10610

**TOTAL CALL VOLUME BY MONTH 2014**

JAN	FEB	MAR	APR	MAY	JUNE	JULY	AUG	SEPT	OCT	NOV	DEC	TOTAL
988	981	1120	1206	1179	1074	1231	1218	1153	1161	1124	1130	13565

**TOTAL CALL VOLUME BY MONTH 2015**

JAN	FEB	MAR	APR	MAY	JUNE	JULY	AUG	SEPT	OCT	NOV	DEC	TOTAL
1137	835	990	1161	1195	1136	1251	1321	1196	1165	1187	1228	13802

**TOTAL CALL VOLUME BY MONTH 2016**

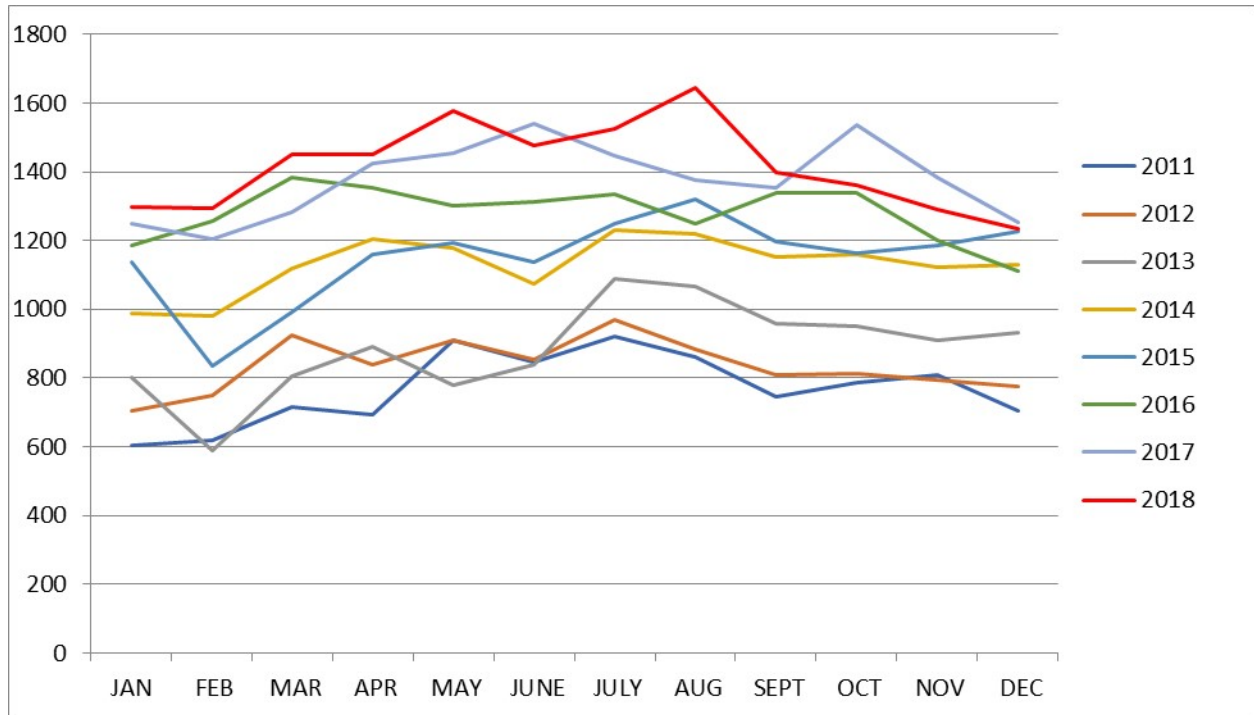
JAN	FEB	MAR	APR	MAY	JUNE	JULY	AUG	SEPT	OCT	NOV	DEC	TOTAL
1185	1258	1382	1353	1301	1312	1334	1249	1338	1339	1201	1112	15364

**TOTAL CALL VOLUME BY MONTH 2017**

JAN	FEB	MAR	APR	MAY	JUNE	JULY	AUG	SEPT	OCT	NOV	DEC	TOTAL
1248	1206	1282	1423	1455	1539	1446	1377	1352	1538	1383	1253	16502

**TOTAL CALL VOLUME BY MONTH 2018**

JAN	FEB	MAR	APR	MAY	JUNE	JULY	AUG	SEPT	OCT	NOV	DEC	TOTAL
1299	1294	1451	1452	1577	1476	1527	1644	1399	1360	1292	1233	17004



Compares 2011 to 2018 Calls For Service where Change shows the Percentage of Increase/Decrease between 2017 & 2018, 5 Year Change shows the Percentage of Increase/Decrease between 2014 to 2018 and 8 Year Change shows the Percentage of Increase/Decrease between 2011 and 2018.

#### 2011 - 2018 CALL COMPARISON

##### ANNUAL TOTALS

	2011	2012	2013	2014	2015	2016	2017	2018		CHANGE	5 YEAR CHANGE	8 YEAR CHANGE
TOTAL CALLS	9216	10024	10610	13565	13802	15364	16502	17004		3%	20%	46%

In 2014, in addition to Jail Transports several other new Nature Types were added for tracking by the Sheriff's Office. While these Nature Types were performed by the Deputies and Dispatchers in the past, they were tracked differently through the CAD System and not accounted for in previous years totals. Since 2014, the totals give a more accurate look at the duties performed by the Sheriff's Office.



**Shows the Calls for Service that the Perry County Sheriff's Office handled in 2018.**

NATURE	NATURE TOTAL
9-1-1 CENTER RESOLUTION	1
9-1-1 TRANSFER	16
911 HANG UP	117
911 TEST	9
911 OPEN LINE	12
ABDUCTION - KIDNAPPING	2
ACCIDENT (HIT SKIP)	33
ACCIDENT (INJURY)	87
ACCIDENT (PROPERTY DAMAGE)	140
ACCIDENT-DEER	41
ACCIDENTAL OVERDOSE	26
AGGRAVATED MENACING	1
ALARM DROP	420
ALARM DROP COMMERCIAL	19
ALARM DROP RESIDENTIAL	43
ANIMAL AT LARGE	6
ANIMAL CALL	189
ASSAULT	104
ASSIST EMS	13
ASSIST OTHER UNIT	328
ASSIST OTHER UNIT LEADS ENTRY	19
ASSIST VILLAGE L.E.	49
ASSIST VILLAGE L.E. EMERGENCY	2
ASSIST OTHER UNIT - EMS	73
ASSIST OTHER UNIT - FIRE	19
ATF BACKGROUND CHECK	5
BACKGROUND CHECK	160
BAD CHECKS / FORGERY	7
BREAKING/ENTERING	142
BREATHING PROBLEMS	3
BURGLARY	92
BURGLARY IN PROGRESS	37
CARDIAC ARREST	1
CCW PERMIT	609
CHEST PAIN	1
CHILDREN SERVICES COMPLAINTS	83
CHOKING	1

CIVIL PROCESS	96
COMPLAINT	715
CRIMINAL DAMAGING	84
CRIMINAL MISCHIEF	1
DEAD ON ARRIVAL	48
DEER DISPATCH	40
DISABLED VEHICLE	228
DISASTER SIREN ACTIVATION	1
DISASTER SIREN TEST	5
DOG BITE	8
DOG WARDEN COMPLAINT	4
DOMESTIC DISPUTE	80
DOMESTIC DISPUTE-INACTIVE	9
DOMESTIC VIOLENCE-INACTIVE	69
DOMESTIC VIOLENCE	111
DRUNK	63
EMERGENCY NOTIFICATION	21
EMPLOYEE BACKGROUND CHECK	12
ESCORT OR PARADE	22
EVIDENCE DESTRUCTION ORDER	10
EVIDENCE FORFEITURE ORDER	10
EXPLOSIVE DEVICE	1
EXTRA PATROL	216
FFL APPLICATION	3
FIGHT	44
FIRE	6
FIRE RESIDENTIAL	1
FIEARM - FOUND	1
FIREARMS QUALIFICATION	11
FIREWORKS	6
FLOOD EMERGENCY	16
FLOOD WARNING	2
FOLLOW UP	22
FUNERAL ESCORT	7
GAS DRIVE OFF	1
GAS LEAK (INSIDE)	1
GAS LEAK (OUTSIDE)	1
GUN SIEZURE COURT ORDER	7
IDENTITY THEFT	21
INFORMATION ONLY	114

INTERNAL INVESTIGATION	12
JUVENILE - RUNAWAY	65
JUVENILE - UNRULY	65
JUVENILE - CUSTODY DISPUTE	81
JUVENILE-MISSING	5
JUVENILES	67
LARCENY	296
LARCENY OUT OF VEHICLE	14
LEVEL 1 SNOW EMERGENCY	9
LITTER COMPLAINT	145
LIVE STOCK ON ROADWAY	41
LOG NOTE	15
LOST / FOUND PROPERTY	54
MAN WITH GUN	10
MAN WITH KNIFE	7
MENACING	6
MENTAL	98
MISSING PERSON	19
MISSING PERSON FOUND	5
MISSING PERSON SEARCH	7
MONEY ESCORT	13
MOTORCYCLE, ATV, MINIBIKE	1
NARCOTICS	83
NARCOTICS TASK FORCE	95
NATURE UNKNOWN	102
NEIGHBOR TROUBLE	21
NEIGHBOR TROUBLE - INACTIVE	31
NOISE COMPLAINT	24
NOTIFICATION - WELL BEING CHECK	304
OPEN DOOR	27
OPEN WINDOW	1
OTHER DOCUMENTS-NOT BAD CHECKS	7
PARKING VIOLATION	7
PC CARE TEAM RESPONSE	28
PHONE HARASSMENT	3
PO VIOLATION-COMMON PLEAS	15
PO VIOLATION-COUNTY COURT	5
PROJECT LIFESAVER REGISTRATION	2
PROPERTY DISPOSAL	4
PROTECTION ORDER	33

PROWLERS	64
PUBLIC INTERACTION EVENT	101
RADIO TEST	16
RAPE	5
RECORDS DISPOSAL	1
RECOVERED STOLEN OTHER AGENCY	14
RECOVERED STOLEN PROPERTY OTHER	4
RECOVERED STOLEN PROPERTY	3
RECOVERY STOLEN/WANTED VEHICLE	12
REPOSSESSION	81
REQUEST K-9	2
ROAD CLOSED	2
ROBBERY	3
SCHOOL RESOURCE COMPLAINT	10
SECURITY ASSESSMENT	1
SEARCH WARRANT	3
SERVICE RUN-FIRE	9
SEX OFFENSE	17
SHOOTING	6
SHOPLIFTER	1
SHOTS FIRED	35
SNOW EMERGENCY	2
SOMEONE EXPOSING THEMSELVES	4
SPECIAL DETAIL	31
SPECIAL DETAIL PCSO	19
SQUAD RUN	117
STABBING OR CUTTING	1
STAND-BY	1
STOLEN CAR	56
STROKE/CVA	1
SUBPEONA	761
SUICIDE	4
SUICIDE ATTEMPT	78
SUICIDE ATTEMPT OVERDOSE	11
SUSPICIOUS CAR	520
SUSPICIOUS PERSON	317
THREATS OR HARASSMENT	194
TRAFFIC DETAIL	21
TRAFFIC JAM OR ROADBLOCKED	41
TRAFFIC OFFENSE	828

TRANSFERRED CALLS	47
TRANSPORT CONVEYANCE	17
TRANSPORT JDC	159
TRANSPORT OTHER COUNTY	292
TRANSPORT REMOVAL	28
TRANSPORT SEORJ	645
TRESPASSING COMPLAINT	155
UNAUTHORIZED USE OF VEHICLE	27
UNDER-SPEED VEHICLE INSPECTION	3
UNLOCK	121
USE OF FORCE	15
USE OF K-9	45
VANDALISM	93
VEHICLE FIRE COMMERCIAL/FARM	1
VEHICLE FIRE	3
WANTED VEHICLE	8
WARRANT ARREST	362
WATER/ICE RESCUE	1
WEATHER EMERGENCY	3
<b>GRAND TOTAL</b>	<b>12272</b>

### Crime Stats for Theft/Burglary and Violence Related Crimes

Compares 2014 thru 2018 with Change indicating the Percentage of Increase or Decrease between 2017 & 2018 Calls. 2013 Calls are provided as a reference. These Numbers are based on Dispatch Information at the Time of Call and that some of these calls are handled by Local P.D. if they are on Duty in their respective Villages since the PCSO handles the Dispatching for these calls.

#### 2018 THEFT CRIMES

	2013	2014	2015	2016	2017	2018	CHANGE 2017/2018	5 YEAR CHANGE 2014/2018
BURGLARY	132	102	140	116	91	129	42%	26%
BREAKING & ENTERING	131	106	105	98	119	142	19%	34%
LARCENY	401	377	380	345	304	296	-3%	-21%
IDENTITY THEFT	25	42	52	32	23	21	-9%	-50%
LARCENY OUT OF VEHICLE	-	29	63	52	42	14	-67%	-52%
GAS DRIVE OFF	-	0	1	2	0	2	200%	100%
SHOPLIFTER	-	1	4	7	3	1	-67%	0%
ROBBERY	7	4	4	7	5	3	-40%	-25%
STOLEN CAR	48	53	63	67	76	76	0%	43%
UNAUTHORIZED USE	19	20	15	28	23	27	17%	35%
TOTALS	763	734	827	754	686	711	4%	-3%

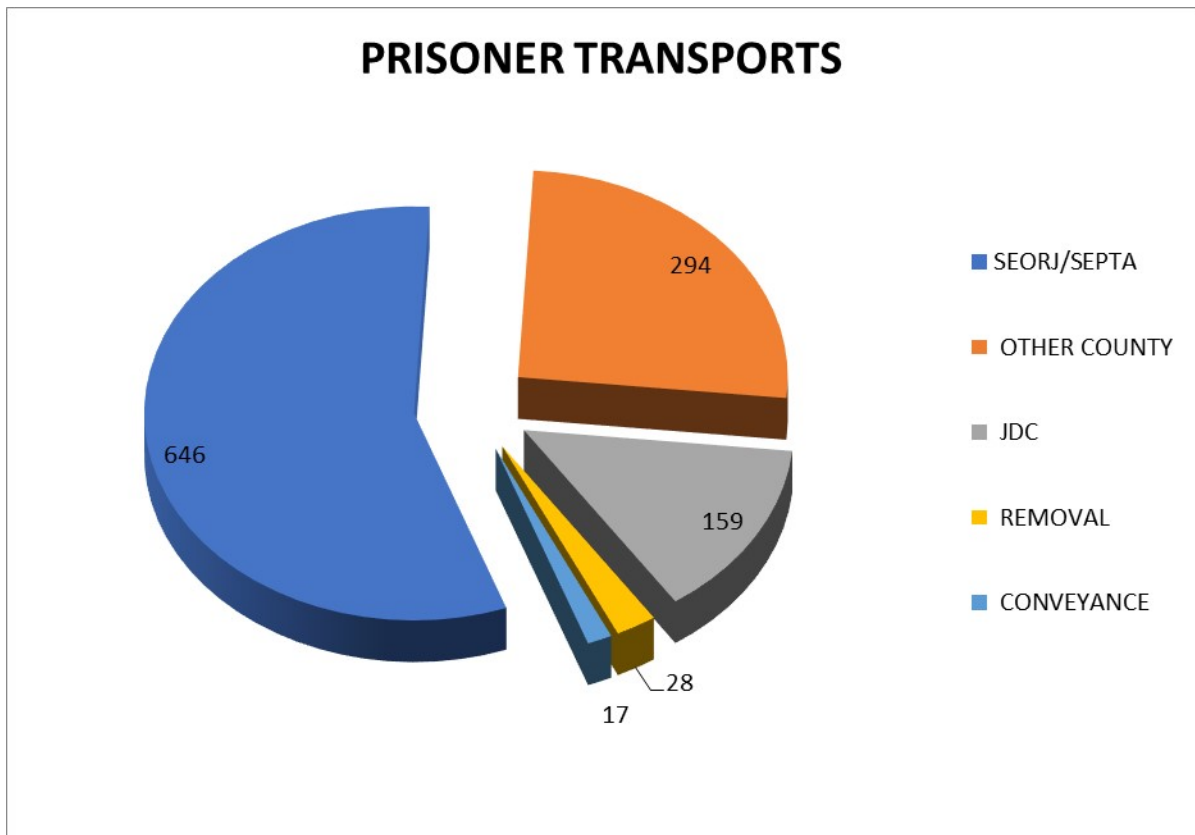
#### 2018 VIOLENT CRIMES

	2013	2014	2015	2016	2017	2018	CHANGE 2017/2018	5 YEAR CHANGE 2014/2018
ASSAULT	109	99	103	88	83	104	25%	5%
DOMESTIC VIOLENCE	211	173	184	183	228	180	-21%	4%
DOMESTIC DISPUTE	104	84	77	117	113	89	-21%	6%
NEIGHBOR TROUBLE	38	47	44	56	64	52	-19%	11%
FIGHT	68	61	73	50	47	44	-6%	-28%
RAPE	0	8	5	8	9	5	-44%	-38%
SHOOTING	6	7	4	5	4	6	50%	-14%
STABBING	2	1	1	1	1	1	0%	0%
HOMICIDE	0	1	2	1	0	0	0%	-100%
TOTALS	429	481	493	509	549	481	-12%	0%

## 2018 JAIL TRANSPORTS

The Perry County Sheriff's Office is responsible for Transporting prisoners for Court appearances and to Prison.

	No. Made	%
SEORJ/SEPTA	646	56%
OTHER COUNTY	294	26%
JDC	159	14%
REMOVAL	28	2%
CONVEYANCE	17	2%



**2018 CIVIL STATISTICS**

The Civil Division of the Perry County Sheriff's Office is responsible for the processing and tracking of Court documents (subpoenas, Protection Orders, Jury Notices, Civil Hearings, etc.) to be served by Sheriff's Deputies in addition to processing and entering of Warrants and Sheriff's Sales.

<b>TOTAL COURT PAPERS SERVED</b>	<b>1224</b>		
<b>TOTAL COURT PAPERS FAILED</b>	<b>528</b>		
<b>TOTAL WARRANTS SERVED</b>	<b>570</b>		
<b>COURT PAPERS MILES TRAVELED</b>	<b>30,389</b>		
<b>WARRANTS MILES TRAVELED</b>	<b>13,597</b>		
<b>WARRANTS TO REMOVE</b>	<b>134</b>	<b>MILEAGE</b>	<b>10,162</b>
<b>WARRANTS TO CONVEY</b>	<b>68</b>	<b>MILEAGE</b>	<b>3235</b>
<b>SHERIFF'S SALES</b>	<b>86</b>		
<b>CONCEAL CARRY PERMITS</b>	<b>307 INITIAL</b>		
	<b>301 RENEWALS</b>		
<b>CIVIL PROTECTION ORDERS SERVED</b>	<b>186</b>		



## 2018 CASE INVESTIGATIONS

### General Case Investigations

2018 saw an increase in cases assigned to the Sergeant Investigator. In 2017 a total of 110 cases were assigned to the Sergeant Investigator; however, in 2018 129 cases were assigned. In turn 2018 yielded more cases (42) being submitted to the Prosecutor, in comparison with 2017 (36). There are fewer cases remaining open from 2018 (13) when compared with 2017 (23). 2018 consisted of 116 cases being closed or cleared at the end of the year which results in 90 percent of the cases assigned to the Sergeant Investigator being either submitted to the Perry County Prosecuting Attorney's Office or investigated until the case has no further leads. The vast majority of cases presented to the prosecuting Attorney's Office were Felony level cases resulting in multiple charges to multiple suspects. In 2018, multiple additional cases were presented to the Perry County Prosecuting Attorney's office from previous years as well resulting in charges/or closing of the case. From previous years a total of twenty-four (24) additional cases were presented for charges from cases ranging from 2015 to 2017. An additional six (6) cases were closed from 2015 thru 2017. When adding the figures to this year's stats a total case filed with the prosecutor results in sixty-six (66) cases filed in total this year as well as eighty (80) cases closed. The results on average over a twelve (12) month period of cases completed per month are twelve (12) cases a month. In total Thirty-Nine (39) Felony charges were filed on suspects broken down by degree of offense Felony of the first Degree Four (4) charges, Felony of the second degree Nine (9) charges, Felony of the third degree Nine charges (9), Felony of the fourth degree Ten charges (10), and Felony of the fifth degree Seven charges (7). In 2018 a total of twenty (20) misdemeanor charges were filed on suspects.

The General Case Division executed a total of 12 search warrants in Perry County for Felony level offenses to include property crimes, sexual assault crimes, assistance to other agencies, and crimes of violence. The 12 search warrants executed in 2018 were slightly down in comparison with 2017 when 17 search warrants were executed.

The General Case Division recovered \$68,720 dollars' worth of stolen property in 2018. The property recovered consisted of information obtained by citizens, execution of search warrants, investigation, and Officer Reports. The \$68,720 worth of stolen property recovered in 2018 is also slightly lower than the \$95,712 recovered in 2017, however over a two (2) year span The General Case Division has recovered \$164,432 dollars' worth of stolen property.

In 2018 the General Case Division also received one hundred and thirty (130) hours of training to include topics of incident command system, Facebook Investigation and Forensics,

Homemade Explosives Awareness Recognition, and Response, Drug Identification Systems, Certified Taser Instructor, Human Trafficking Investigations, Alert Instructor in Civilian Response to Active Shooter, Crisis Intervention Team, Search Warrant Major Case Investigation, Judgmental Driving Simulator, Judgmental Firearms Simulator.

In conclusion, it is difficult to solve property crimes (Burglary, Theft) when there is very little information to continue an investigation. It is important for the general public to log make, model, serial numbers and owner applied number to all items of value in their home. It is also important when completing a theft report to provide as much detail about the item reported missing as possible. If this information is provided to a responding Deputy or Investigator the chance(s) of solving the case, or recovering the property increase significantly.

On The following page is a breakdown of the information provided by the General Case Division of the Perry County Sheriff's Office.

**2018 General Case Stats****Cases Closed: 74****Open Cases: 13****Cleared Cases: 42****Total Cases: 129****Cases Closed: 57 %****Cases Open: 10%****Cleared Cases: 33%****General Case Detective Recovered: \$68,720 worth of stolen property in 2018.****General Case Detective Typed: 12 Search Warrants in 2018****Cases Submitted from Previous Years in 2018****2015 cases- 7 Cases to PAO****2017 Cases- 17 Cases to PAO****Cases Closed from Previous Years****2017 Cases- Six (6)*****2018 Felony Charges Filed- 39*****F-1- (4)****F-2- (9)****F-3- (9)****F-4- (10)****F-5- (7)*****2018 Misdemeanor Charges Filed- 20******2018 Total Charges- 59***

***Training received in 2018***

Incident Command System 400-14 Hours  
Facebook Investigations and Forensics-3 hours  
Homemade Explosives Awareness, Recognition, and  
Response-8 Hours  
Sirchie Nark II drug identification system- 3 hours  
Certified Taser Instructor- 16 hours  
Human Trafficking Investigations- 24 hours  
Alert Instructor Civilian Response to Active Shooter- 4 hours  
Crisis Intervention Team- 40 hours  
Search Warrant Major Case Investigation- 16 hours  
Judgmental Driving Simulator- 1 hour  
Judgmental Firearms Simulator- 1 hour

130 Hours Total

**2018 Misdemeanor/Felony charges combined:**

**651 Misdemeanor charges**

**186 Felony Charges**

**Total: 837 felony/misdemeanor charges filed**

**69 misdemeanor/felony charges filed per month**

**16 misdemeanor/felony charges filed per week**

**2.2 misdemeanor/felony charges per day**

## 2018 Misdemeanor Case Stats

**Traffic:**

251 Charges

**Criminal:**

400 Charges

**651 Misdemeanor Charges**

**54 Misdemeanor charge per month.**

**12.5 Misdemeanor charges per week.**

**1.7 Misdemeanor charges per day.**

**Traffic Examples-** Driving under suspension to no head light to operating a vehicle under the influence.

**Criminal Examples-** Domestic Violence, Assault, Theft, criminal trespass, drug paraphernalia, drug abuse instruments.

## 2018 Children Services Investigations

In 2016, The Perry County Sheriff's Office & Perry County Children Services were able to place a Deputy with Children Service's to assist with investigations.

Total Cases	113
Closed	84
Still Open	13
Charges Pending	9
Arrests	7
Charges:	
Rape	3
Domestic Violence	1
Drug Possession	1
Child Endangering	3
Failure to report Abuse/Neglect	1

## **OHIO COLLABORATIVE**

On November 13<sup>th</sup> 2017, the Perry County Sheriff's Office was awarded certification by the Ohio Collaborative Community-Police Advisory Board for the adoption & implementation of state standards for:

1. Use of Force
2. Use of Deadly Force
3. Agency Employee Recruitment & Hiring
4. Body Worn Cameras
5. Community Engagement
6. Law Enforcement Telecommunicator Training

### **2018 Reporting related to Collaborative Standards**

Use of Force - 15

Community Engagement (Public Interaction Event) – 101

The Office will be required to submit compliance documentation every year prior to the anniversary of our certification and will undergo an audit every 3 years to show compliance.





CENTRAL OHIO DRUG ENFORCEMENT  
TASK FORCE  
2018 REPORT

## Central Ohio Drug Enforcement Task Force

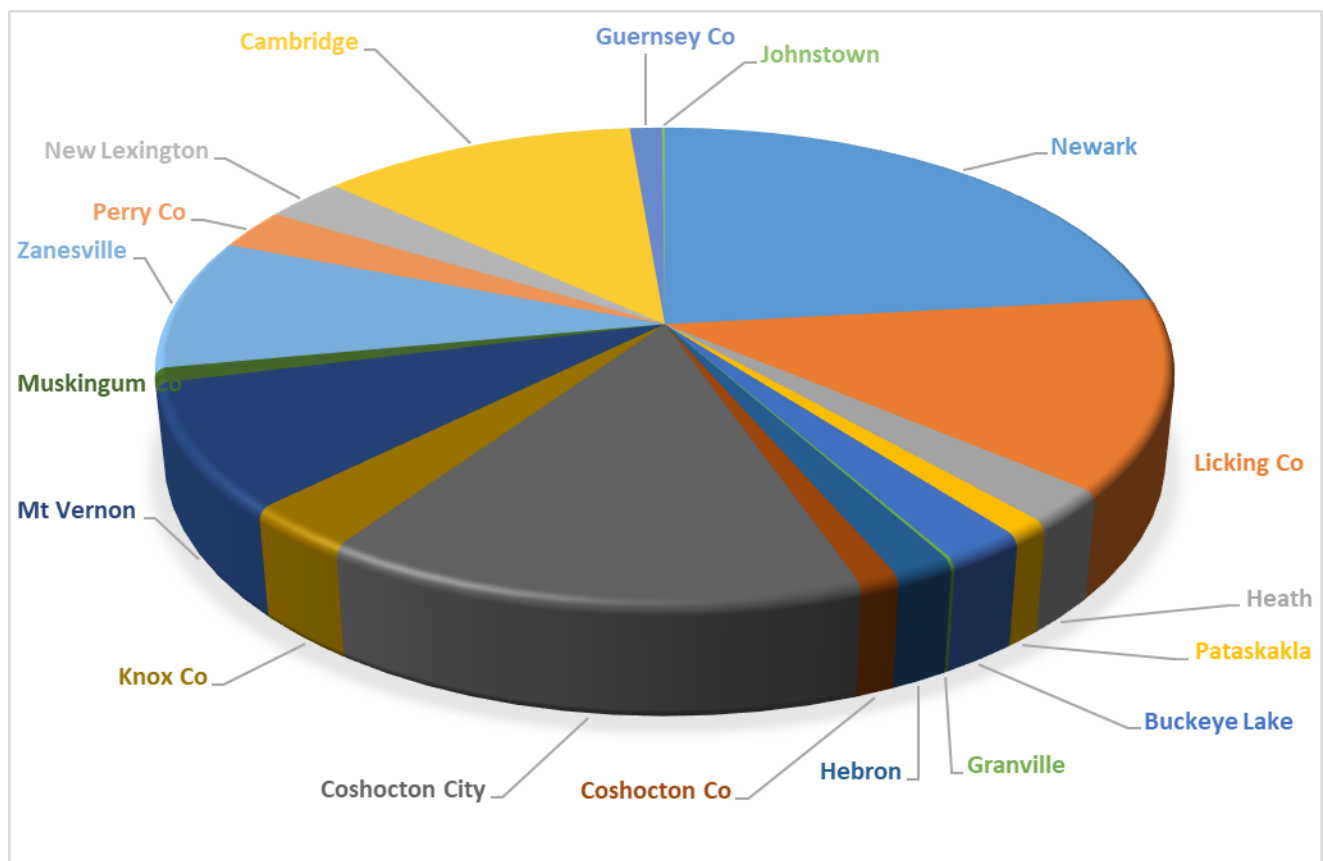
### 2018 Statistics

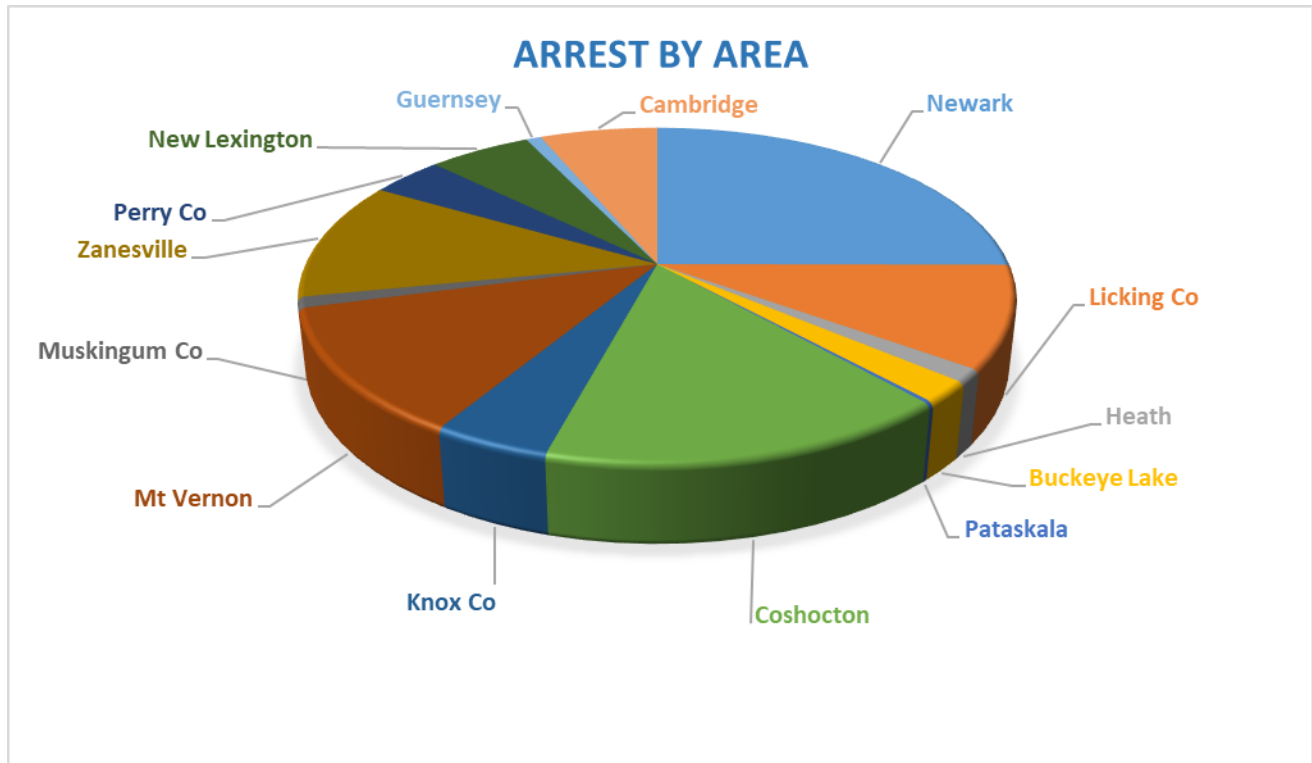
#### Case Statistics:

Cases opened by area:	<u>2016</u>	<u>2017</u>	<u>2018</u>
Newark:	260	272	211
Licking County:	119	80	118
Buckeye Lake:	07	11	20
Granville:	10	03	01
Heath:	29	25	21
Hebron:	08	04	15
Johnstown:	07	16	01
Pataskala:	26	16	10
Utica:	04	05	05
Coshocton County:	08	08	10
Coshocton:	84	151	135
Guernsey County:	00	02	11
Cambridge:	00	17	109
Knox County:	12	37	28
Mt. Vernon:	52	63	77
Muskingum County:	13	07	09
Zanesville:	158	94	81
Perry County:	49	53	25
New Lexington:	49	30	27

Total:	2016	2017	2018
Total Cases Opened:	918	898	942
Cases Closed:	716	772	925

## CASES BY AREA





### Arrest Statistics

Arrest by Area:	2016	2017	2018
Newark:	106	153	122
Licking County:	39	23	48
Buckeye Lake:	05	04	10
Johnstown:	02	06	03
Heath:	18	10	06
Hebron:	01	05	06
Pataskala:	04	08	01
Utica:	00	02	01
Granville:	01	01	--

Arrest by Degree:			
F-1:	33	50	45
F-2:	68	77	111
F-3:	127	169	214
F-4:	81	89	150
F-5:	304	310	349
M-1:	32	65	24
M-2:	29	28	04
M-4:	75	53	28
M-M:	41	30	15

Coshocton County:	01	00	02
Coshocton:	24	41	75
Guernsey County:	00	03	04
Cambridge:	00	11	31
Knox County:	06	10	22
Mt. Vernon:	10	26	59
Muskingum County:	09	04	05
Zanesville:	108	96	56
Perry County:	46	59	19
New Lexington:	51	28	27

**Arrest by Charge**

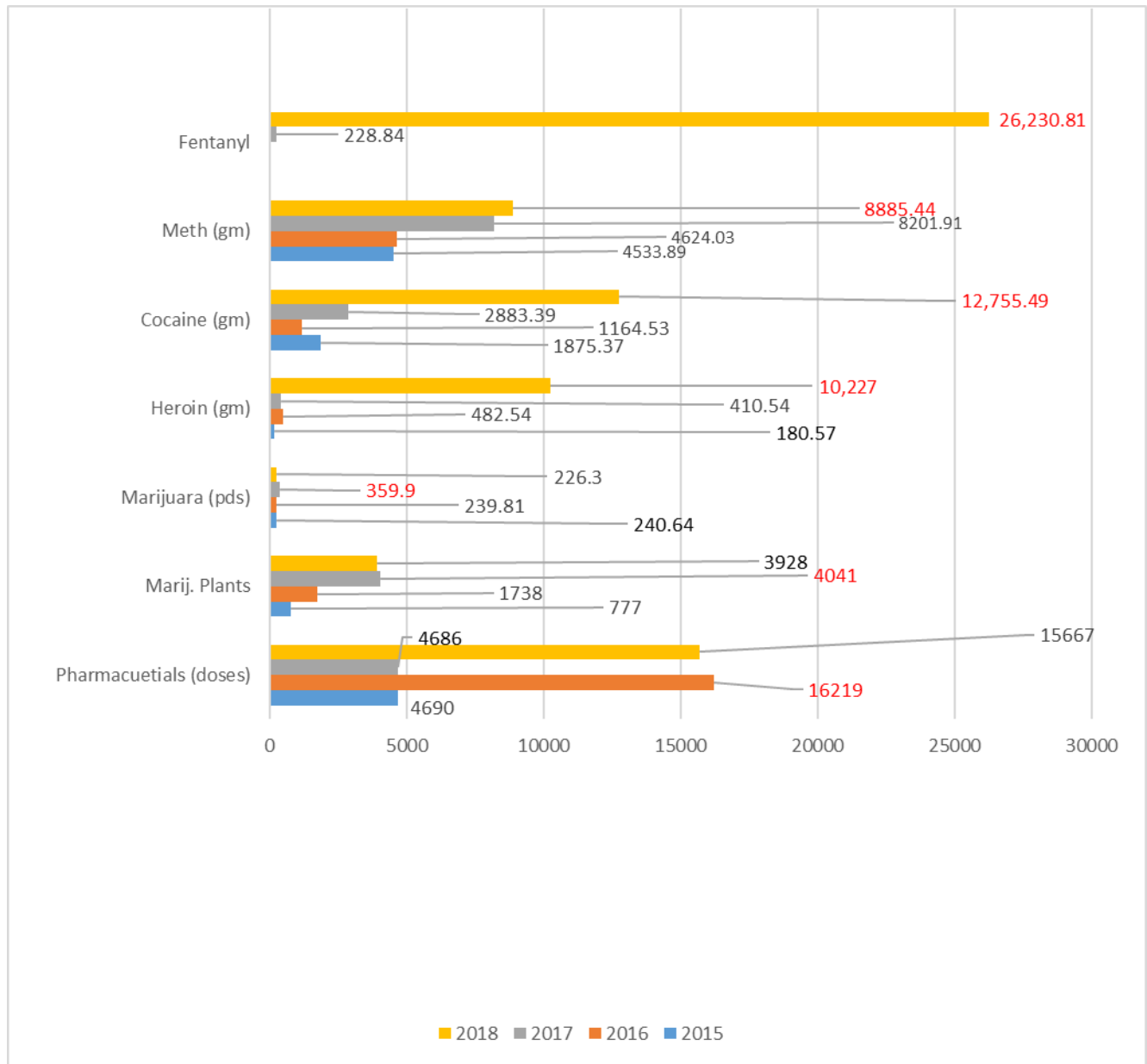
	<u>2015</u>	<u>2016</u>	<u>2017</u>	<u>2018</u>
1. Possession of Meth:	81	150	172	203
2. Trafficking in Meth:	55	76	98	191
3. Trafficking in Heroin:	33	20	46	62
4. Possession of Heroin:	36	63	40	58
5. Possession of Prescription Drugs:	47	71	48	43
6. Trafficking in Prescription Drugs:	52	27	20	35
7. Possession of Cocaine:	21	45	36	26
8. Possession of Drug Paraphernalia:	10	78	46	26
9. Trafficking in Cocaine:	34	20	38	25
10. Possession of Marijuana:	21	45	35	24
11. Illegal Manufacture of Drug:	18	07	09	18
12. Trafficking in Marijuana:	21	13	31	17
13. Permitting Drug Abuse:	06	15	20	13
14. Possession of Fentanyl	--	--	06	14
15. Trafficking in Fentanyl	--	--	04	14
16. Possession of Drug Instr.:	07	31	35	10
17. Possession of MDMA	--	--	01	09
18. Trafficking in Counterfeit	05	02	04	07
19. Trafficking in MDMA	--	--	01	07
20. Trafficking in L.S.D.:	02	02	02	06

21. Possession of Hashish	01	03	01	04
22. Trafficking in Crack Cocaine	--	--	02	04
23. Cultivation:	15	15	19	04
24. Illegal Assembly of Chemicals:	28	13	11	02
25. Trafficking in Psilocybin	--	--	00	03
26. Possession of Psilocybin	--	--	00	02
27. Improper Handling Firearm Motor Vehicle:	02	03	07	02
28. Possession Of Crack Cocaine	--	--	03	02
29. Possession of Carfentanil	--	--	01	--

	<u>2015</u>	<u>2016</u>	<u>2017</u>	<u>2018</u>
Warrant Arrest:	08	27	52	27
Weapons Under Disability	--	22	23	25
Tampering W/Evidence:	15	06	13	17
Pattern of Corrupt Activity:	05	02	12	05
Illegal Conveyance:	03	04	10	10
Driving Under Suspension	--	--	10	--
Child Endangering	--	--	08	04
Complicity to Agg. Trafficking:	01	01	07	02
Obstructing	--	07	07	01
Failure to Comply	--	--	--	06
Receiving Stolen Property	--	05	05	09
Poss. Of Criminal Tools	--	--	04	06
Falsification	--	04	--	--
Resisting Arrest	--	04	03	02
Corrupting	02	03	02	03
Possession of Dangerous Drug	--	--	02	01

Money Laundering	--	01	02	03
Theft of Drugs:	03	01	02	--
Carrying Concealed Weapon:	01	04	01	01
Intimidation:	03	02	01	--
Involuntary Manslaughter	00	02	01	--
OMVI	--	--	--	03
Participating in a Criminal Gang	--	--	00	02
Disorderly Conduct	--	--	01	--
Escape	--	--	01	01
Felony Assault	--	--	01	--
Forgery	--	--	01	--
Funding Drug Trafficking	--	--	01	--

## Seizure Four year Comparison





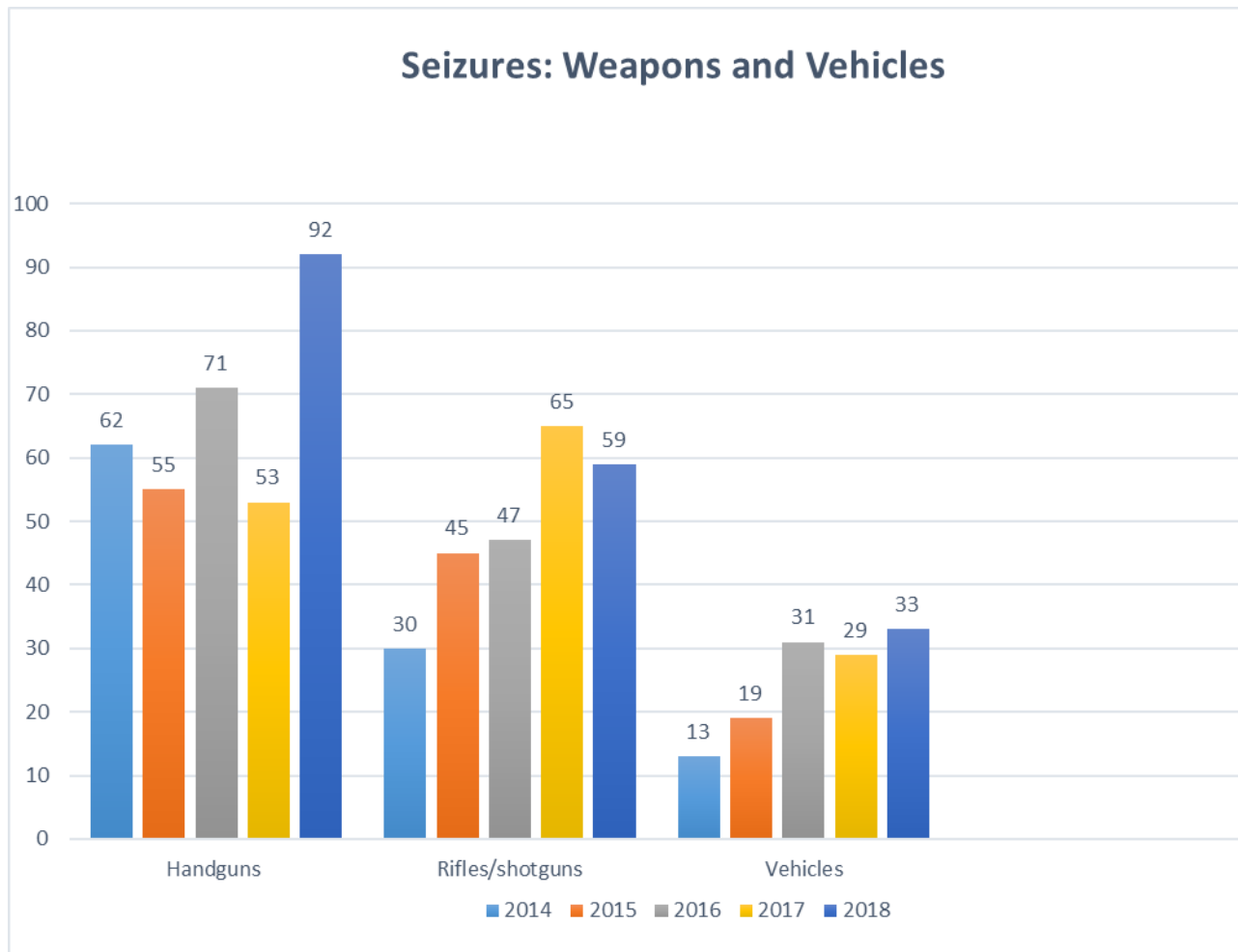
## Seizure Statistics

Drug:	# of Seizures	Quantity	Value
Meth (Ice)	462	8,885.44 grams	\$347,128.00
Heroin	211	10,227.13grams**	\$617,555.80
Cash	119	\$447,320.56	
Marijuana	115	102,770.01 grams	\$276,895.00
Pharmaceuticals	103	1,401 doses	\$10,919.00
Alprazolam	--	14,266 *	\$212,265.00
Weapons	87	151 each	UNK.
Cocaine	53	12,755.49grams	\$649,591.00
Fentanyl	30	822.07 grams	\$36,736.00
Fentanyl	01	25,408.74grams***	\$1,560,524.00
Vehicles	25	33 each	UNK.
MDMA	23	400 doses/54.36 grams	\$2,530.00
Marijuana Plants	16	3,928 each	UNK.
Crack Cocaine	15	9.72 grams	\$1,470.00
LSD	14	95 doses/1.59 grams	\$930.00
Hashish	11	495.06 grams	\$8,903.00
Ketamine	10	1,175.65 grams	\$80,100.00
Psilocybin	10	1,114.15 grams	\$800.00
Total number of seizures	1,305 with an est. street value of		\$3,806,346.00

\* 13,609 Alprazolam seized from one case working with US Postal.

\*\* 9,596.08 grams of Heroin seized from one seizure assisting DEA with K9 search.

\*\*\* 25,408.74 grams of Fentanyl seized from one seizure assisting DEA with a K-9 search.



## Criminal Interdiction 2018

730 Total incidents / stops

155 cases opened

87 Closed Arrests

Seizures:

Drug: ..... 167    Cash: ..... 26    Weapons: ..... 06    Vehicles:..... 03

